

C44 HALF PITCH BOX HEADER SMT

PITCH: 1.27mm * 1.27mm

SPECIFICATIONS

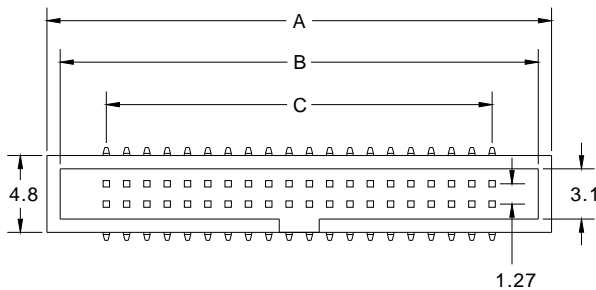
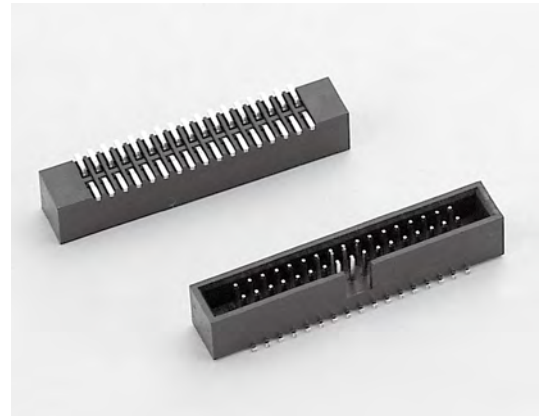
Material

Insulator : LCP, glass reinforced, rated UL 94V-0
 Contact : Phosphor Bronze

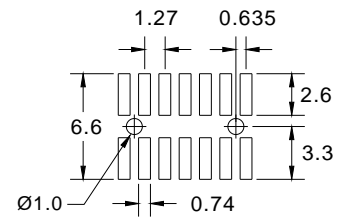
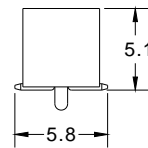
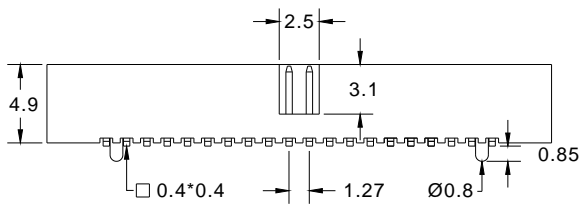
Electrical

Current Rating : 1 Amp
 Contact Resistance : 30 mΩ max.
 Insulation Resistance : 1000 MΩ min.
 Dielectric Withstanding Voltage : 250V AC for 1minute
 Operating Temperature : -40°C to +105°C

► Mating Suggestion : A32, A32c, A52, B61 & B61a series.



POSITION	A	B	C
6	9.97	8.31	2.54
8	11.24	9.58	3.81
10	12.51	10.85	5.08
12	13.78	12.12	6.35
14	15.05	13.39	7.62
16	16.32	14.66	8.89
20	18.86	17.20	11.43
22	20.13	18.47	12.70
24	21.40	19.74	13.97
26	22.67	21.01	15.24
30	25.21	23.55	17.78
34	27.75	26.09	20.32
40	31.56	29.90	24.13
44	34.10	32.44	26.67
50	37.91	36.25	30.48
60	44.26	42.60	36.83
68	49.34	47.68	41.91
80	56.96	55.30	49.53



RECOMMENDED P.C.B LAYOUT

How to order: C44 - 1 - 2 - 3 - 4 - 5 - 6 - G(RoHS)

1.NO. OF CONTACT	2.CONTACT MATERIAL	3.CONTACT PLATING	4.SPECIAL FUNCTION	5.PACKAGING	6.INSULATOR COLOR
06 08 10 12 14 16 20 22 24 26 30 34 40 44 50 60 68 80	B: PHOSPHOR BRONZE	T: TIN PLATED S: SELECTIVE G: GOLD FLASH A: 5u" INCH GOLD B: 10u" INCH GOLD C: 15u" INCH GOLD D: 30u" INCH GOLD	A: WITH LOCATING PEG B: W/O LOCATING PEG	A:TUBE WITH PAD B: TUBE W/O PAD C: TAPE & REEL WITH PAD	1. BLACK