

# B15d SINGLE ROW FEMALE HEADER SMT (H: 6.1mm)

**PITCH: 1.27mm**

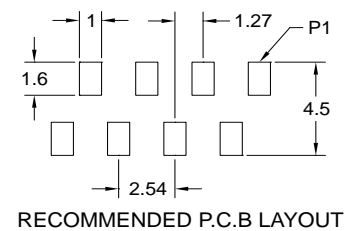
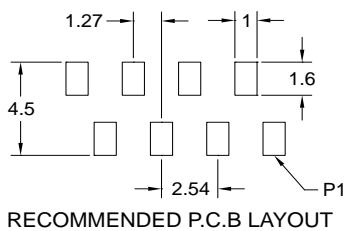
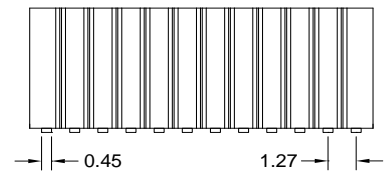
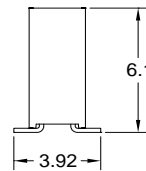
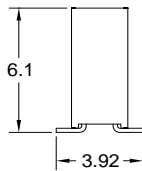
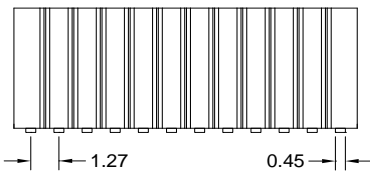
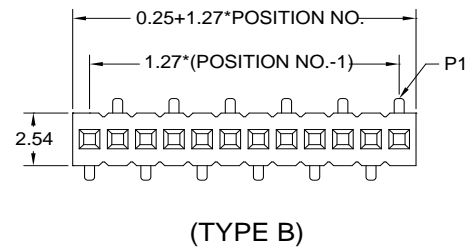
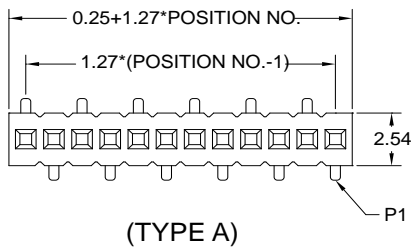
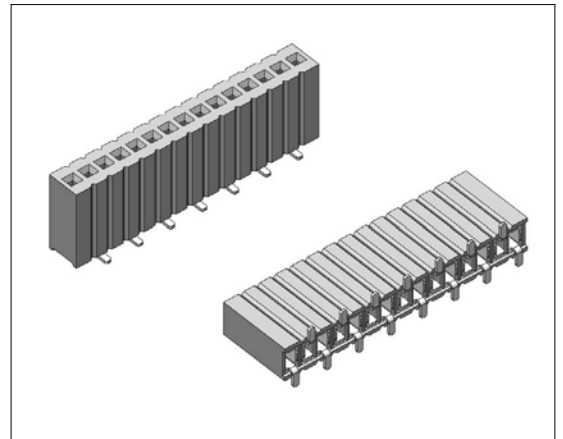
## SPECIFICATIONS

### Material

Insulator : LCP, glass reinforced, rated UL 94V-0  
 Contact : Phosphor Bronze

### Electrical

Current Rating : 1 Amp  
 Contact Resistance : 30 mΩ max.  
 Insulation Resistance : 1000 MΩ min.  
 Dielectric Withstanding Voltage : 250V AC for 1minute  
 Operating Temperature : -40°C to +105°C  
 ▶ Mating Suggestion : C09 & C10 series.



**How to order:** B15d - 1 - 2 - 3 - 4 - 5 - 6 - G(RoHS)

1.NO. OF CONTACT	2.CONTACT MATERIAL	3.CONTACT PLATING	4.FOOT RANK TYPE	5.PACKAGING	6.INSULATOR COLOR
SINGLE ROW 1*2 - 1*40	B: PHOSPHOR BRONZE	T: TIN PLATED <b>S: SELECTIVE</b> G: GOLD FLASH A: 5u" INCH GOLD B: 10u" INCH GOLD C: 15u" INCH GOLD D: 30u" INCH GOLD	A: TYPE A B: TYPE B	A:TUBE WITH PAD B: TUBE W/O PAD C: TAPE & REEL WITH PAD	1. BLACK



**DON CONNEX**  
ELECTRONICS CO., LTD

T:886 2 86483356 | F:886 2 86485885  
e-mail: info@donconnex.com.tw



Connector:E163339 | Flat cable:E162690  
Wiring Harnesses:E312257