

B15b FEMALE HEADER WITH POLARIZATION BUMP SMT PROFILE : 5.8mm

PITCH: 1.27mm * 2.54mm

SPECIFICATIONS

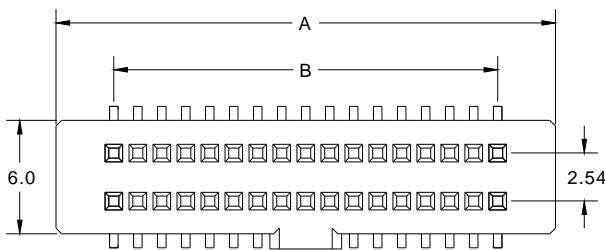
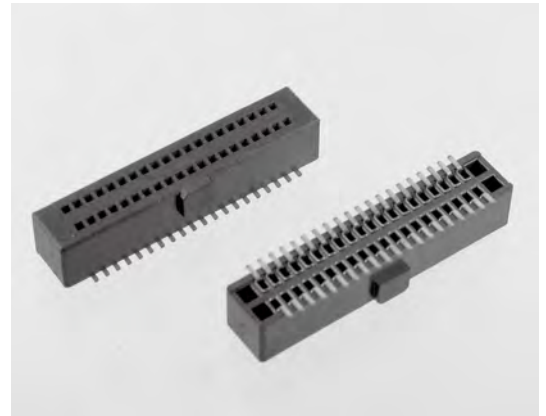
Material

Insulator : LCP, glass reinforced, rated UL 94V-0
Contact : Phosphor Bronze

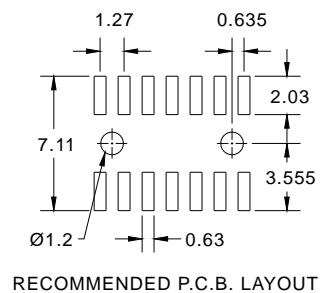
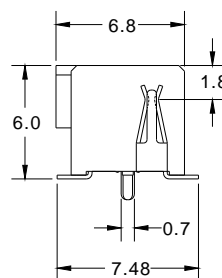
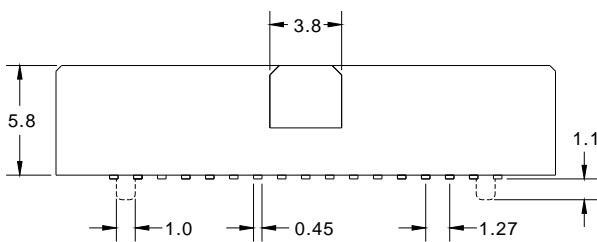
Electrical

Current Rating : 1 Amp
Contact Resistance : 30 mΩ max.
Insulation Resistance : 1000 MΩ min.
Dielectric Withstanding Voltage : 250V AC for 1minute
Operating Temperature : -40°C to +105°C

► Mating Suggestion : A69a, C07a, C07c, C08a, C08c & C08s series.



| POSITION | A | B |
|----------|-------|-------|
| 10 | 11.20 | 5.08 |
| 14 | 13.74 | 7.62 |
| 16 | 15.01 | 8.89 |
| 20 | 17.55 | 11.43 |
| 26 | 21.36 | 15.24 |
| 30 | 23.90 | 17.78 |
| 34 | 26.44 | 20.32 |
| 40 | 30.25 | 24.13 |
| 50 | 36.60 | 30.48 |
| 60 | 42.95 | 36.83 |
| 68 | 48.03 | 41.91 |
| 70 | 49.30 | 43.18 |
| 80 | 55.65 | 49.53 |
| 90 | 62.00 | 55.88 |
| 100 | 68.35 | 62.23 |



How to order: B15b - 1 - 2 - 3 - 4 - 5 - 6 - G(RoHS)

| 1.NO. OF CONTACT | 2.CONTACT MATERIAL | 3.CONTACT PLATING | 4.SPECIAL FUNCTION | 5.PACKAGING | 6.INSULATOR COLOR |
|---|--------------------|---|---|--|-------------------|
| 10 14 16 20 26 30 34 40 50 60 68 70 80 90 100 | B: PHOSPHOR BRONZE | T: TIN PLATED S: SELECTIVE G: GOLD FLASH A: 5u" INCH GOLD B: 10u" INCH GOLD C: 15u" INCH GOLD D: 30u" INCH GOLD | A: WITH LOCATING PEG B: W/O LOCATING PEG | A: TUBE WITH PAD B: TUBE W/O PAD C: TAPE & REEL WITH PAD | 1. BLACK |



DON CONNEX
ELECTRONICS CO., LTD

T: 886 2 86483356 | F: 886 2 86485885
e-mail: info@donconnex.com.tw



Connector: E163339 | Flat cable: E162690
Wiring Harnesses: E312257