

A67 SINGLE ROW IDC SOCKET (DUAL U SLOT & DUAL CONTACT)

PITCH: 2.5mm

SPECIFICATIONS

Material

Insulator : PC, rated UL 94V-0

Contact : Phosphor Bronze

Electrical

Current Rating : 2 Amp

Contact Resistance : 30 mΩ max.

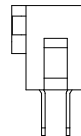
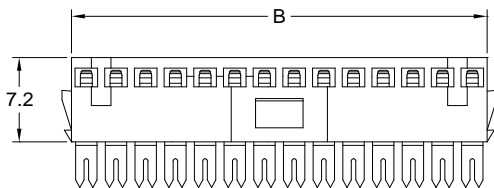
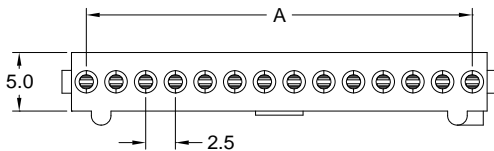
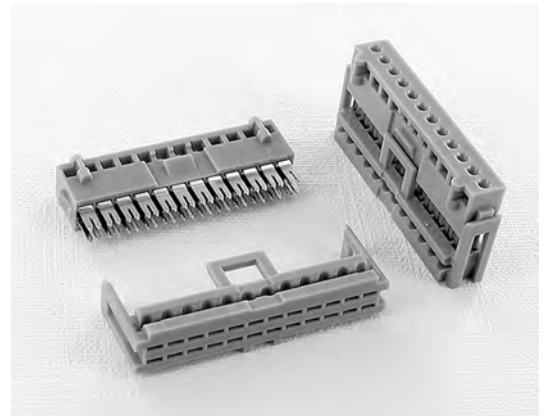
Insulation Resistance : 3000 MΩ min.

Dielectric Withstanding Voltage : 500V AC for 1minute

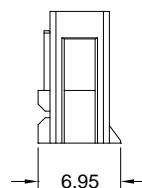
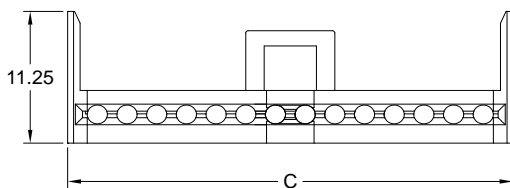
Operating Temperature : -40°C to +105°C

▶ Terminated with L04a 2.5mm pitch flat ribbon cable.

▶ Mating Suggestion: C62, C63, C64 & C65 series.



POSITION	A	B	C
3	5.00	7.50	10.00
4	7.50	10.00	12.50
5	10.00	12.50	15.00
6	12.50	15.00	17.50
7	15.00	17.50	20.00
8	17.50	20.00	22.50
9	20.00	22.50	25.00
10	22.50	25.00	27.50
11	25.00	27.50	30.00
12	27.50	30.00	32.50
13	30.00	32.50	35.00
14	32.50	35.00	37.50
15	35.00	37.50	40.00
16	37.50	40.00	42.50
17	40.00	42.50	45.00
18	42.50	45.00	47.50
19	45.00	47.50	50.00
20	47.50	50.00	52.50



How to order: A67 - 1 - 2 - 3 - 4 - G(RoHS)

1.NO. OF CONTACT	2.CONTACT MATERIAL	3.CONTACT PLATING	4.INSULATOR COLOR
03 04 05 06 07 08 09 10 11 12 13 14 15 16 17 18 19 20	B: PHOSPHOR BRONZE	T: TIN PLATED S: SELECTIVE G: GOLD FLASH A: 5u" INCH GOLD B: 10u" INCH GOLD C: 15u" INCH GOLD D: 30u" INCH GOLD	2. GREY



DON CONNEX
ELECTRONICS CO., LTD

T:886 2 86483356 | F:886 2 86485885
e-mail:info@donconnex.com.tw



Connector:E163339 | Flat cable:E162690
Wiring Harnesses:E312257