

# A52a HALF PITCH WIRE TO BOARD CRIMP HOUSING

**PITCH: 1.27mm \* 1.27mm**

## SPECIFICATIONS

### Material

Insulator : LCP, glass reinforced, rated UL 94V-0

### Electrical

Current Rating : 1 Amp

Contact Resistance : 30 mΩ max.

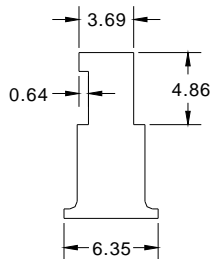
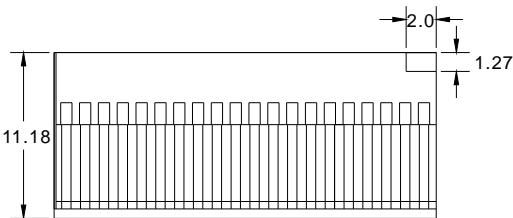
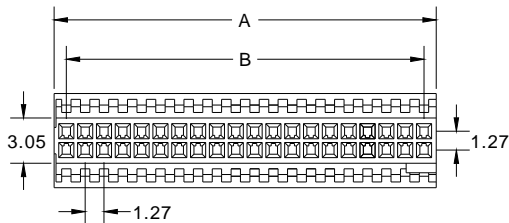
Insulation Resistance : 1000 MΩ min.

Dielectric Withstanding Voltage : 250V AC for 1minute

Operating Temperature : -40°C to +105°C

▶ Crimp Terminal Insertion : A52b series.

▶ Mating Suggestion : C92, C92a, C92b, C93 & C93a series.



POSITION	A	B
4	2.92	1.27
6	4.19	2.54
8	5.46	3.81
10	6.73	5.08
12	8.00	6.35
14	9.27	7.62
16	10.54	8.89
20	13.08	11.43
22	14.35	12.70
26	16.89	15.24
30	19.43	17.78
34	21.97	20.32
40	25.78	24.13
44	28.32	26.67
50	32.13	30.48
60	38.48	36.83
68	43.56	41.91
80	51.18	49.53

**How to order:** A52a - 1 - 2 - G(RoHS)

1.NO. OF CONTACT	2.INSULATOR COLOR
04 06 08 10 12 14 16 20 22 26 30 34 40 44 50 60 68 80	1. BLACK

