

A32d HALF PITCH IDC FEMALE CONNECTORS

PITCH: 1.27mm * 1.27mm

SPECIFICATIONS

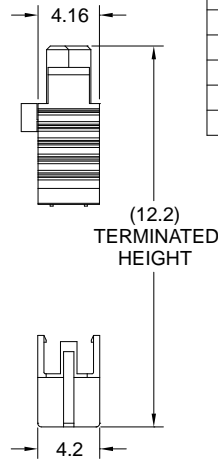
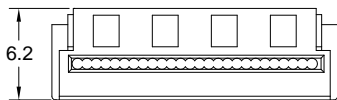
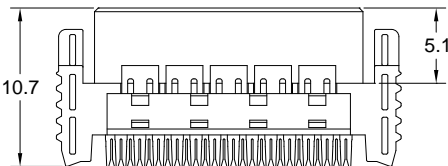
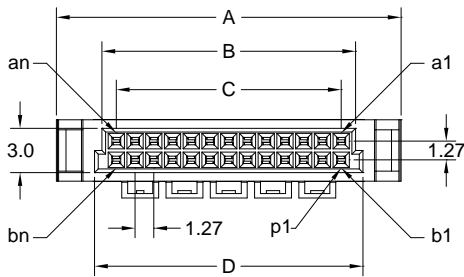
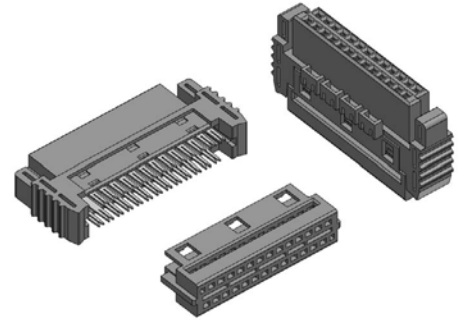
Material

Insulator : LCP, glass reinforced, rated UL 94V-0
 Contact : Phosphor Bronze

Electrical

Current Rating : 1 Amp
 Contact Resistance : 30 mΩ max.
 Insulation Resistance : 1000 MΩ min.
 Dielectric Withstanding Voltage : 250V AC for 1minute
 Operating Temperature : -40°C to +105°C

- ▶ Terminated with L03-0.635mm pitch flat ribbon cable.
- ▶ Mating Suggestion: C57b & C58a series.



POSITION	A	B	C	D
6	10.66	4.49	2.54	5.49
8	11.93	5.76	3.81	6.76
10	13.20	7.03	5.08	8.03
12	14.47	8.30	6.35	9.30
14	15.74	9.57	7.62	10.57
16	17.01	10.84	8.89	11.84
20	19.55	13.38	11.43	14.38
22	20.82	14.65	12.70	15.65
26	23.36	17.19	15.24	18.19
30	25.90	19.73	17.78	20.73
34	28.44	22.27	20.32	23.27
40	32.25	26.08	24.13	27.08
44	34.79	28.62	26.67	29.62
50	38.60	32.43	30.48	33.43
60	44.95	38.78	36.83	39.78
68	50.03	43.86	41.91	44.86
80	57.65	51.48	49.53	52.48

How to order: A32d - 1 - 2 - 3 - 4 - G(RoHS)

1.NO. OF CONTACT	2.CONTACT MATERIAL	3.CONTACT PLATING	4.INSULATOR COLOR
06 08 10 12 14 16 20 22 26 30 34 40 44 50 60 68 80	B: PHOSPHOR BRONZE	T: TIN PLATED S: SELECTIVE G: GOLD FLASH A: 5u" INCH GOLD B: 10u" INCH GOLD C: 15u" INCH GOLD D: 30u" INCH GOLD	1. BLACK